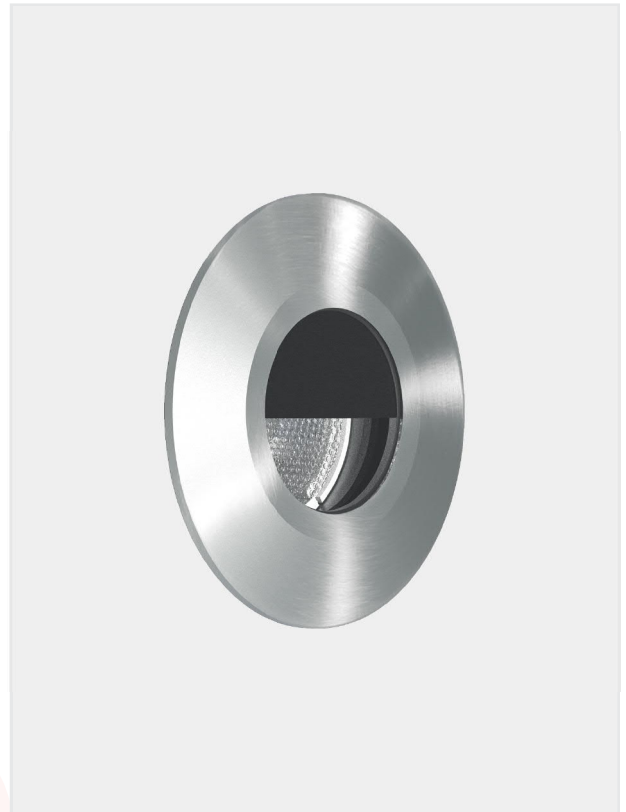


# TERRA SL 40 GC

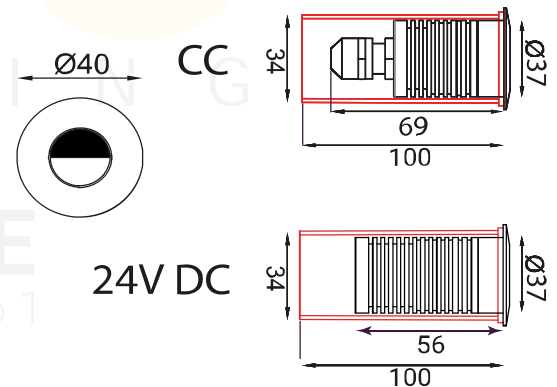
## Features

- Excellent Corrosion Resistant Low Copper Solid Aluminum Body
- SS316 Faceplate
- Extra Safety Impact Resistant, Toughened Glass
- Extra Clear Glass To Increase Efficiency of the Fixture
- High-Grade Silicon Gasket Heat and Cold Resistant
- High-Grade Brass Nickel Plated IP68 German Gland
- High-Efficiency Optical System
- Multiple Accessories Support
- Cree LED 5000\* Hrs Life
- Recessed Housing Made of GFR Polymer
- Coro Safe High-Grade Anodizing
- Capillary Protect System Anti Capillary System To Protect Any Water Ingress From Cable Joints.
- Long Life Thermal Management



## Technical Data

Application Category	Steplight
Wattage	1W /1.5W
Source Lumen	120lm/180lm
Ingress Protection	IP67
Material	Excellent Corrosion Resistance Low Copper, Solid Aluminium Body.
Coatings	Coro Safe High-Grade Anodizing.
Light Source	1 x High Power Led
Life Span	50000 hrs*
Screws	Stainless Steel
Power Supply	CC - Constant Current Driver (3V, 350mA/ 500mA)/ CV- 24V DC
Gasket	High-Grade Silicon Gasket Heat and Cold Resistant
Glass	High Transmission Tempered Glass
Cable Gland	German Gland
Power Cable	Cable Not Included
Dimension	Width : 40mm, Height : 69mm, Dia : 37mm
Gross Weight	-



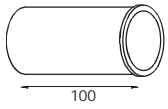
FAMILY	TYPE	CODE	WATTAGE (LUMEN)	CRI	OPTICS	CCT	FINISH	SUPPLY	ACCESSORIES
TERRA	SL	40-GC	1 – 1W (120lm) 1.5 – 1.5W (180lm)	80 – 80 CRI	N – 12° M – 24° W – 40° WF – 60° DF – Diffused	27 – 2700K 30 – 3000K 40 – 4000K	SS – Stainless Steel 316	CC – Constant Current Driver (3V, 350mA/500mA) CV - 24V DC	RH GC

Code Example :- TERRA-SL-40-GC-1.5-80-N-30-SS-CC-GC

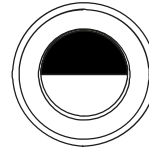


# TERRA SL 40 GC

## Accessories



**RH**  
(Recessed Housing)  
Provided with the fixture for installation.



**GC**  
(Glare Control Glass)  
Optional accessory that integrates to reduce glare.

## Driver Options



Brand- Meanwell  
Code- LPHC-18-350  
Type - Constant Current  
Watt - 18W  
IP Rating - IP67  
No Of Fixtures - Min 3, Max 14  
Dimension-140\*30\*22(L\*W\*H)



Brand- Meanwell  
Code- APC-25-500  
Type - Constant Current  
Watt - 25W  
IP Rating - IP54  
No Of Fixtures - Min 6, Max 16  
Dimension-84\*57\*29.5(L\*W\*H)

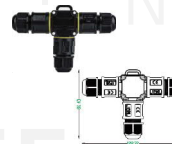


Brand- Meanwell  
Code- LPV-20-24  
Type - Constant Voltage 24V DC  
Watt - 20W  
IP Rating - IP67  
No Of Fixtures - Min 1, Max 4  
Dimension-118\*35\*26mm (L\*W\*H)

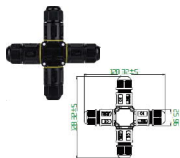
## Optional Accessories



IP Connectors  
Straight Connector  
IP Rating - IP68



IP Connectors  
T Connector  
IP Rating - IP68



IP Connectors  
4 Way Connector  
IP Rating - IP68

## Finish



Stainless Steel