

NOVA SP 41 COB

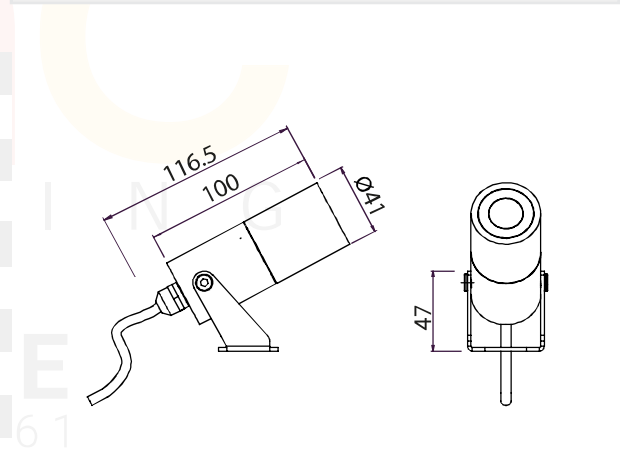
Features

- Solid Aluminium Body.
- Extra Safety Impact Resistant, Toughened Glass.
- High-Efficiency Optical System
- Extra Clear Glass To Increase Efficiency Of The Fixture.
- High Grade Silicon Gasket- Heat & Cold Resistant.
- High Grade Brass Nickel Plated German Gland.
- High Grade Neoprene Silicon Based Italian Cable To Withstand Any Weather Conditions.
- Recessed Spike Made Of GFR Polymer.
- "Coro Safe" High Grade Anodizing.
- "Duracoat" Double Layer Body Coating To With Stand Corrosion.
- "Weather protect" Outdoor Rated Powder Coating.
- "Capillary Protect System" Anti-Capillary System To Protect Any Water Ingress From Cable Joints.
- 1000mm All Weather Neoprene Silicon Power Cable Included



Technical Data

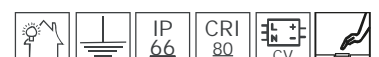
| | |
|----------------------|--|
| Application Category | Projectors |
| Wattage | 6W |
| Source Lumen | 480lm/600lm |
| Ingress Protection | IP66 |
| Material | Aluminium Extrusion And Solid Aluminium Parts |
| Coatings | "Duracoat" Double Layer Body Coating To WithStand Corrosion. |
| Light Source | 1 x High Power Led |
| Life Span | 50000 hrs* |
| Screws | Stainless Steel |
| Power Supply | CV - 24V DC |
| Gasket | High-Grade Silicon Gasket Heat and Cold Resistant |
| Glass | High Transmission Tempered Glass |
| Cable Gland | German Gland |
| Power Cable | Cable Not Included |
| Dimension | Width : 116.5mm, Height : 47mm, Dia : 41mm |
| Gross Weight | - |



24V DC

| FAMILY | TYPE | CODE | WATTAGE (LUMEN) | CRI | OPTICS | CCT | FINISH | SUPPLY | ACCESSORIES |
|--------|------|-----------|-------------------|-------------|--------------------------------|--|---|-------------|----------------|
| NOVA | SP | 41-HP/COB | 6 – 6W (600lm) | 80 – 80 CRI | SP – 19° M – 24° W – 36° | 27 – 2700K 30 – 3000K 40 – 4000K | G – Grey DB – Dark Black MW – Matt White C – Corten DLG – Dark leaf Green | CV – 24V DC | HL TB SP |

Code Example :- NOVA-SP-41-HP-6-80-M-30-G-CV- HL



NOVA SP 41 HP/COB

Accessories



HL
(Hexcell Louvre)
Optional accessory that integrates to reduce glare.



TB
(Tree Belt)
Optional accessory



SP
(Spike)
Optional accessory

Driver Options



Brand - Meanwell
Code - LPV-20-24
Type - Constant Voltage
Watt - 20W
IP Rating - IP67
No Of Fixtures - Min 1, Max 3
Dimension:118*35*26mm (L*W*H)

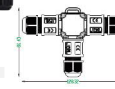


Brand - Meanwell
Code - LPV-60-24
Type - Constant Voltage
Watt - 60W
IP Rating - IP67
No Of Fixtures - Min 1, Max 9
Dimension:162.5*42.5*32mm (L*W*H)

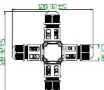
Optional Accessories



IP Connectors
Straing Connector
IP Rating - IP68

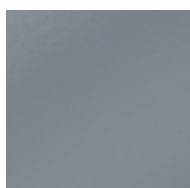


IP Connectors
T Connectort
IP Rating - IP68



IP Connectors
4 Way Connector
IP Rating - IP68

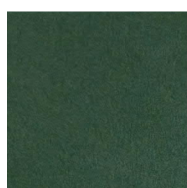
Finish



Grey



Dark Black



Dark Leaf
Green



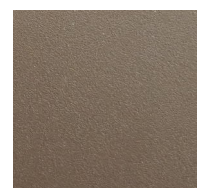
Matt White



Corten



Matt Black



Brown